

# WV Woods

Volume 12  
Number 9  
Winter  
2011-2012

## Greetings Fellow Woodland Owners:

With the past year of record breaking rainfall our woodlands should be less stressed and adding girth to our valuable crop trees.

Of course the excess runoff may have caused some erosion problems if your water bars and ditches needed some work (like-mine). Hopefully, this year will give me enough dry days to work on some of my more pressing TSI issues.

For those of you who missed the annual meeting in Sutton on Nov. 12<sup>th</sup> you missed a really informative day. We learned: all about the work that the American Chestnut Foundation is doing to bring back this once great and abundant species, and how we can participate; all about mycelia in our forests and what we can't see may be more fascinating than what we can see; current timber markets; the ABC's of Conservation Easements; and whether Foresters Matter (the answer is a resounding Yes!).

Your Board will be meeting in mid to late February to plan the future of our association and we would love to have your input. Please contact the board member in your area and let them know what you like about WOA of WV and how we can make your association better fit your needs.

You may also contact me at any time with concerns, suggestions, or questions, *especially suggestions*. We need your active participation and input. Working together we can make West Virginia woodlands even more recreational, profitable, healthy, diverse and beautiful.

Sincerely, Timothy E. Fink, President WOA of WV

You may reach Tim by calling (304) 542-1153 or by e-mailing him at: [tim.fink@nvisionbusiness.com](mailto:tim.fink@nvisionbusiness.com)



## In this issue...

- Article By Tim Fink, WV WOA President
- Perkey Woodland Tour in Monongalia County
- WV WOA Fall Meeting & Seminar
- Benefits & Proper Construction of Forest Roads
- Upcoming Educational Opportunities

## Fall Tour at Perkey Tree Farm, By Arlyn Perkey

It was a beautiful Fall day in 2011 for a tour of the Perkey Farm in Monongalia County, WV. We focused our attention on regenerated red oak and chestnut established by planting seeds in tree tubes. SWPA Woodland Owners had visited the farm 2-growing seasons before.

We had examined an area that had regenerated to sycamore after a timber harvest by the previous owner. A nearby sycamore seed source combined with the fact that deer do not prefer sycamore seedlings, resulted in a nearly pure sycamore stand on an upland site. I injected the stems with herbicide to deaden them. I then planted acorns in short (about 18" high) tubes. The second growing season, I selected the best (tallest, most vigorous) seedlings, and put them in prototype, 7-inch diameter, 3 foot tall, tubes being field tested by Plantra (Figure 1).

These prototypes have been improved and are currently being marketed as OMNI Plant Tubes. The larger diameter of the tubes allows additional light to penetrate to a lower level in the tube. Leaves have more room so they are not held stationary in the tube. They are better able to orient toward the sun, and grow to a larger size.

For more information about this topic contact Arlyn Perkey at: [aperkey1@live.com](mailto:aperkey1@live.com).



Figure 1. Red oak seedling in Plantra OMNI Tube



**Figure 2. New 2011 Member John Frazer & WVDOF Forester Ben Kunze in Hampshire County, WV**

**WV Woodland Owners Fall Meeting & Seminar**

The WV WOA held its Fall 2011 meeting & seminar in Sutton, WV. About 40 people attended including members, speakers, and guests. Vicki Pierson, head of the WV Chapter of the American Chestnut Foundation led off, telling the group about the current status of research to create a hybrid of the American chestnut tree. The organization is also making an effort to locate surviving parent trees to obtain viable seed sources. She also discussed that the WV Chapter is currently holding fund-raising and membership drives while providing outreach education about the American chestnut at public parks and schools.

Next, Dr. Dan Panaccione, Professor of Mycology and Genetics at WVU discussed the basics of how mushrooms affect forests and the benefits they provide by breaking down leaves and other plant parts. Fungi are valuable because they help to form soil, provide nutrients into the surrounding environment, and serve as a food sources for wildlife and humans.

The luncheon speaker was Dr. Ben Spong, WVU Forest Operations Extension Specialist who spoke to the group about the current conditions of the timber and wood product markets in WV. Dr. Spong spoke about how wood product mills are currently struggling with the decreased demand for specific wood products such as lumber for new home construction, but also mentioned that markets for rail-road ties, pellet fuel, pulpwood, and hardwood flooring are still solid. He also discussed that market uncertainty has caused some wood product mills to go out of business. With fewer mills, demand for standing timber is less which leads to lower prices paid to forest-owners in WV. Other associated market problems include mills keeping lower wood inventories and a

labor shortage of available fellers and operators to harvest timber.

The first speaker after lunch was Joe Hatton, WV NRCS Easement Specialist who talked about the basics of property easements by explaining that conservation easements are an agreement a landowner makes to restrict development that can take place on their property. Also, depending on the easement type, production of timber or agriculture crops is permitted, but there are some easements that do not permit either development or crop production. Moreover, easements are a method for landowners to keep their forestland intact and even receive tax breaks in return.

Dr. Stuart Moss, WVU Assistant Professor of Forest Business was the final speaker and he explained to the group the influence professional foresters have on the outcome of timber sales on private woodlands. He explained generally private foresters have a positive affect by obtaining higher timber prices for landowners and leaving their woodlands in more satisfying conditions after the harvest is complete.

**The Clements State Tree Nursery...**

...sells seedlings to landowners and businesses in WV and its surrounding states for the purposes of reforestation, coal mine reclamation, wildlife cover and Christmas tree production. Most of the seedling species are native to West Virginia and all are genetically suitable for success not only in West Virginia, but also in the neighboring states.



**Figure 3. Entrance to Clements State Nursery near Point Pleasant, WV**

Orders are taken each year from Oct. 1 through April 30th. Shipping begins Thanksgiving week and runs through April (weather permitting). Seedling orders can be paid over the phone with a credit card, or by mail with a check or money order (Online ordering coming soon).

For more information call the Clements State Tree Nursery at: **304-675-1820**

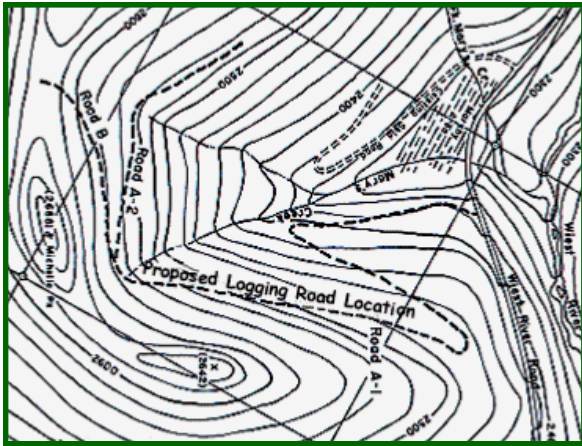


Figure 4. Forest road location on a contour map

### Benefits & Proper Construction of Forest Roads

Forest access roads provide many benefits to landowners. Forest roads allow landowners to access different areas of their property for wildfire control, hiking, biking, and hunting, and for various forestry and wildlife management activities. Forest roads, properly planned and constructed can serve important roles if timber is harvested or when the family or friends want to take a walk in the woods.

Planning is the most important step in developing an access road. Poor planning is associated with the following common causes of road failure:

- Improper placement and construction of road fills
- Insufficient culvert sizes
- Very steep road grades
- Removal of slope support by undercutting
- Altering drainage by interception and concentrating surface and subsurface flows.

Because roads are long-term features and significant investments in the improvement of a property, their location must be carefully planned. Careful planning can assure a landowner's needs are met for safe access, minimal maintenance problems, protected water quality, and minimized costs over the short and long term. At a minimum, road locations should be flagged and approved by the landowner in advance of any construction; this includes identifying all temporary road locations as well. In order to plan an efficient and reliable road, it is better too first draw their locations on a contour map (Figure 4).



Figure 5. Properly constructed forest access road

Using a pencil, you can draw in the tentative desired road location onto the contour map, making sure that control points (areas or surface features that limit road construction) are avoided; control points include rock outcrops, ridges, saddles, benches, wet areas, sink holes, property lines, and streams. Once this is completed it is best to walk the route of the road to insure all recommended best management practices standards can be met. After this step is completed, go out to the woods and flag the line. This will allow you to look for any problems not seen on the contour map. Once the route is laid out, construction can begin.

Once construction is completed, the road should be seeded with a mixture of perennial and annual grasses, and clover to control erosion. The herbaceous plants will reduce the speed of water that might erode the road. Gating off the road from public access is a good idea to control trespassing and motor-vehicle traffic (Figure 5).

Another key in keeping access roads intact and fully functional is the periodic maintenance on the road such as keeping culverts, drainage ditches and other water control devices free from excess dirt and debris. This will ensure they operate correctly and are not plugged and damaged during storm events. Also keep logs, branches and rocks off the road so it remains easily passable and safe.

Much of this information was adapted from *A Landowner's Guide to Building Forest Access Roads* by R.L. Weist (1998). You can find the full document at: <http://www.na.fs.fed.us/spfo>

---

---

### *Upcoming Woodland-Related Educational Opportunities*

For up-to-date information on woodland related workshops go to: <http://www.woaofwv.org> or <http://wvstewards.ning.com>.

#### **Winter Tree Identification Seminars:**

Instructor: Dr. Dave McGill

Come out to an evening of exploring the trees and shrubs of West Virginia. This indoor seminar will give participants hands-on experience in identifying trees by bark, twig, and bud attributes. The group will learn how to use “keys” along with twig and branch specimens to determine wildland tree species without leaves. Magnifying lenses and written materials will be provided at the workshop. Workshops are free; no experience necessary; bring a friend!

**February 6, 2012**—Wood County; 6:30 to 8:30 p.m.; to RSVP and for directions, please contact J.J. Barrett (Wood County Extension Agent); 304-424-1960 or e-mail: [JJ.Barrett@mail.wvu.edu](mailto:JJ.Barrett@mail.wvu.edu).

**February 7, 2012**—Roane County; 6:30 to 8:30 p.m.; to RSVP and for directions, please contact Brandy Brabham (Roane County Extension Agent); 304-927-0975 or e-mail: [Brady.Brabham@mail.wvu.edu](mailto:Brady.Brabham@mail.wvu.edu).

**February 8, 2012**—Nicholas County; 6:30 to 8:30 p.m.; to RSVP and for directions, please contact Brian Sparks (Nicholas County Extension Agent); 304-872-7898 or e-mail: [BRSparks@mail.wvu.edu](mailto:BRSparks@mail.wvu.edu).

**February 28, 2012**—Preston County; 6:30 to 8:30 p.m.; to RSVP and for directions, please contact Bill Shockey (Preston County Extension Agent); 304-329-1391 or e-mail: [Bill.Shockey@mail.wvu.edu](mailto:Bill.Shockey@mail.wvu.edu).

**WV Christmas Tree Growers Association Winter Meeting** will be held on February 25 and 26, 2012 at the Days Hotel in Flatwoods, WV. For more information and directions contact Art Yagel at 304-575-2787 or e-mail at: [artvsmoke@hotmail.com](mailto:artvsmoke@hotmail.com)

#### **WVU Small Farms Conference**

March 1-3, 2012; Waterfront Place Hotel; Morgantown, WV; for more information go to:

<http://smallfarmcenter.ext.wvu.edu/conference>

---

---



**Woodland Owner's Assoc. of  
West Virginia, Inc.**

**PO Box 443**

**Nitro, WV 25143**

**[WOAofWV.org](http://WOAofWV.org)**